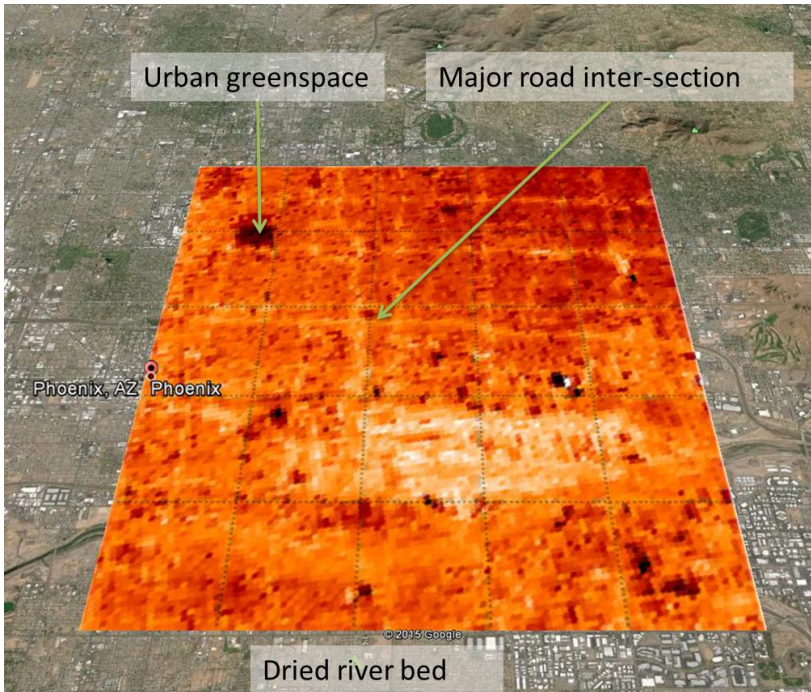
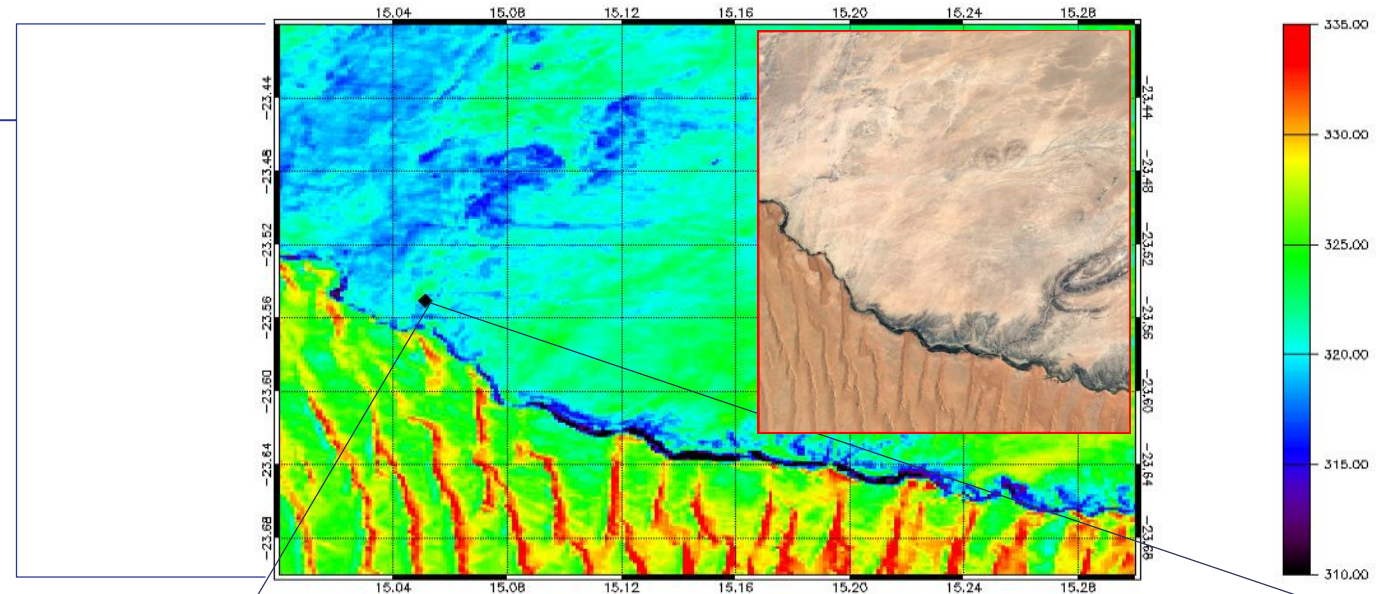


High Spatial Resolution Retrieval of LST and LSE from ASTER

- Developed a High spatial resolution retrieval of LST and LSE
- Initially developed for ASTER (Perry et.al, in preparation)
- Validation undertaken at the KIT Gobabeb Site →
- Used in the development of future thermal instrumentation



LST retrieval from ASTER data over Phoenix Airport 2014.



GBB Wind					
Latitude	-23.55				
Longitude	15.05				
Retrieval Bias (K)	-0.29				
Retrieval uncertainty (K)	0.88				
ASTER Channel	10	11	12	13	14
Retrieved LSE	0.82	0.82	0.81	0.92	0.93
Retrieved LSE Uncertainty	0.012	0.011	0.011	0.014	0.011
Radiance Residual	-0.0006	-0.11	-0.03	0.19	0.04